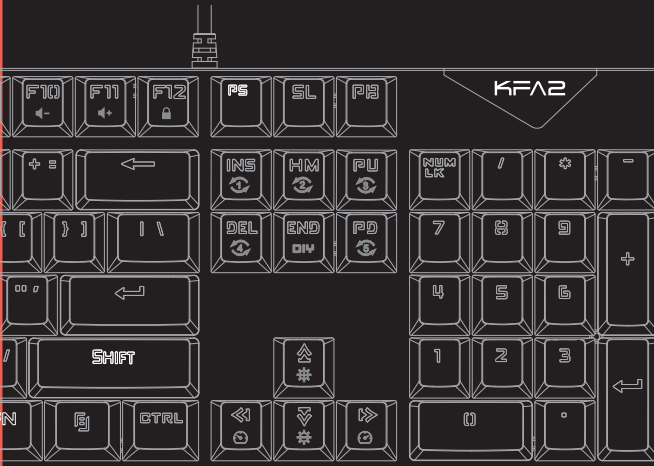


STEALTH STL-03

MECHANICAL KEYBOARD SERIES

KFA2

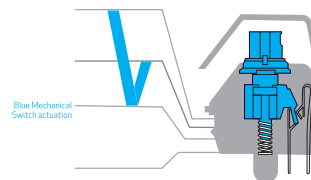
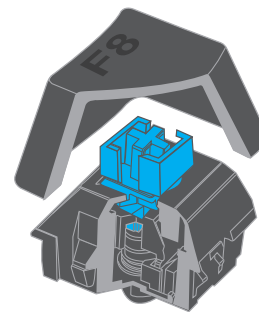


IMPORTANT PRODUCTS
INFORMATION GUIDE

FEEL THE BEST MECHANICAL SWITCH DESIGNED FOR GAMING

Mechanical Switches are perfectly tuned to the specific needs of gamers. Featuring optimized actuation points and a durability that surpasses the competition, these impressive switches enable you to execute your commands faster than before, for even longer.

When you press a key, the stem travels downwards, depressing the spring till the switch is activated and your action is actuated. Upon release, the spring bounces back to its original position, thus resetting the key.



Blue Mechanical Switch*	
Actuation Point	2.2±0.6mm
Life Span (keystrokes)	Up to 50 Million
Actuation Force	55g±5g

*Based on manufacturer specifications

STEALTH STL-03

MECHANICAL KEYBOARD SERIES



- 1 FN+(F1-F12) EASY ACCESS MEDIA KEYS**
For convenient volume control and media playback
- 2 FN+(INS-DEL...) BACKLIGHT MODES**
With 20 different dynamic backlight modes
- 3 BACK LIGHT CONTROL FUNCTION**
Back light adjustable cutting: fast, slow, light, dark.
- 4 6 7 FN+(DIY/C1/C2/LC)**
Backlight self design
- 5 MULTI GAME BACKLIGHT MODES**
8 popular game backlight modes

KFA2

STEALTH STL-03

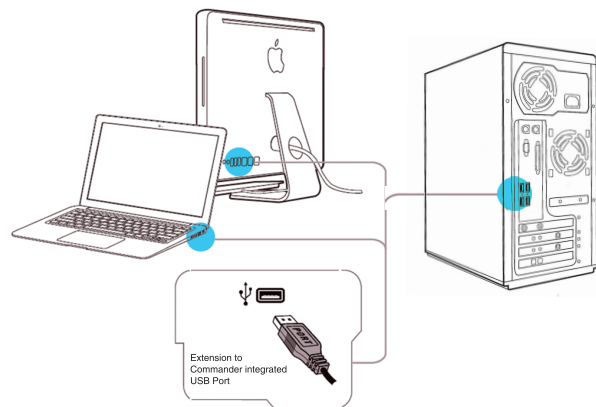
MECHANICAL KEYBOARD SERIES



www.kfa2.com
Country of origin: CHINA

INSTALLATION / TECHNICAL SUPPORT

INSTALLATION



Step 1 : Plug the KFA2 STL-03 to your computer's USB port.

Step 2 : The Keyboard starts working with running LED lights for all keys.

INSTRUCTIONS:



Pressing the "FN" key in combination with the function keys will activate their secondary features

Function keys	Features Description
	FN+F1= Computer FN+F2= Search FN+F3= Calculator FN+F4= Windows Media Player
	FN+F5= Prev Track FN+F6= Next Track FN+F7= Play/Pause FN+F8= CD Stop
	FN+F9= Mute FN+F10= Volume FN+F11= Volume+ FN+F12= Lock /Unlock Function Keys

Function keys	Features Description
	The keyboard has 20 backlight modes by 5 combined keys, FN+(1), FN+(2), FN+(3), FN+(4), FN+(5), each combined keys has 4 backlight mode options
	FN+(6), FN+(7), will adjust the lights running speed, 5 -changes FN+(8), FN+(9), can adjust the backlights brightness, 6 changes
	MULTI GAME BACKLIGHT MODES 8 popular game backlight modes
	FN + C1/C2 enter custom modes, press FN+DIY start recording, press the key you want to light on, press FN+DIY again to finish setting, Then FN+C1/C2 will light keys on as you designed. FN+ESC clear your self design.
	FN+WINDOWS, Can Lock/Unlock WINDOWS Key, "win" light will show;

ENGLISH

- Mechanical Switches with 55g±5g actuation force
- 50 million keystroke life span
- Backlighting with 3 color
- 104 key roll-over anti-ghosting
- Approximate size: 425*120*30mm
- Approximate weight: 670±10g
- Arm Rest Size: 425*75*23 mm

DEUTSCH

- Mechanische Schalter mit 55g±5g Betätigungskraft
- 50 Millionen Tastenanschläge
- Hintergrundbeleuchtung mit 3 Farben
- Anti-Ghosting mit 104 Tasten
- Ungefähre Größe: 425 * 120 * 30 mm
- Ungefähres Gewicht: 670±10g
- Armlehne Größe: 425*75*23 mm

ESPAÑOL

- Interruptores mecánicos con Fuerza de actuación 55g±5g
- Vida útil de 50 millones de pulsaciones
- Retroiluminación con 3 colores
- 104 teclas anti-efecto fantasma
- Tamaño aproximado: 425 * 120 * 30 mm
- Peso aproximado: 670±10g
- Apoya brazos: 425*75*23 mm

FRANÇAIS

- interrupteurs mécaniques 55g±5g force motrice
- 50 millions de touches
- rétroéclairage 3 couleurs
- 104 clé anti - retournement anti - GHOSTING
- taille approximative: 425 * 120 * 30 mm
- poids approximatif: 670±10g
- Accoudoir taille: 425*75*23 mm

PORTUGUÊS [BR]

- Chaves mecânicas com Força de atuação 55g±5g
- 50 milhões de vida útil de pressionamento de tecla
- Retroiluminação com 3 cores
- Anti-ghosting de rollover de 104 teclas
- Tamanho aproximado: 425 * 120 * 30 mm
- Peso aproximado: 670±10g
- Descanso para o braço: 425*75*23 mm